



One ticket to the future

Towards sustainable personal mobility

By Sven Borén, PhD student,
Blekinge Institute of Technology



European
Regional
Development
Fund

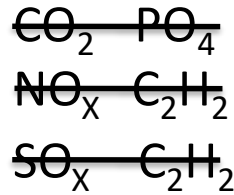


Sustainability Challenges

Major transport issues



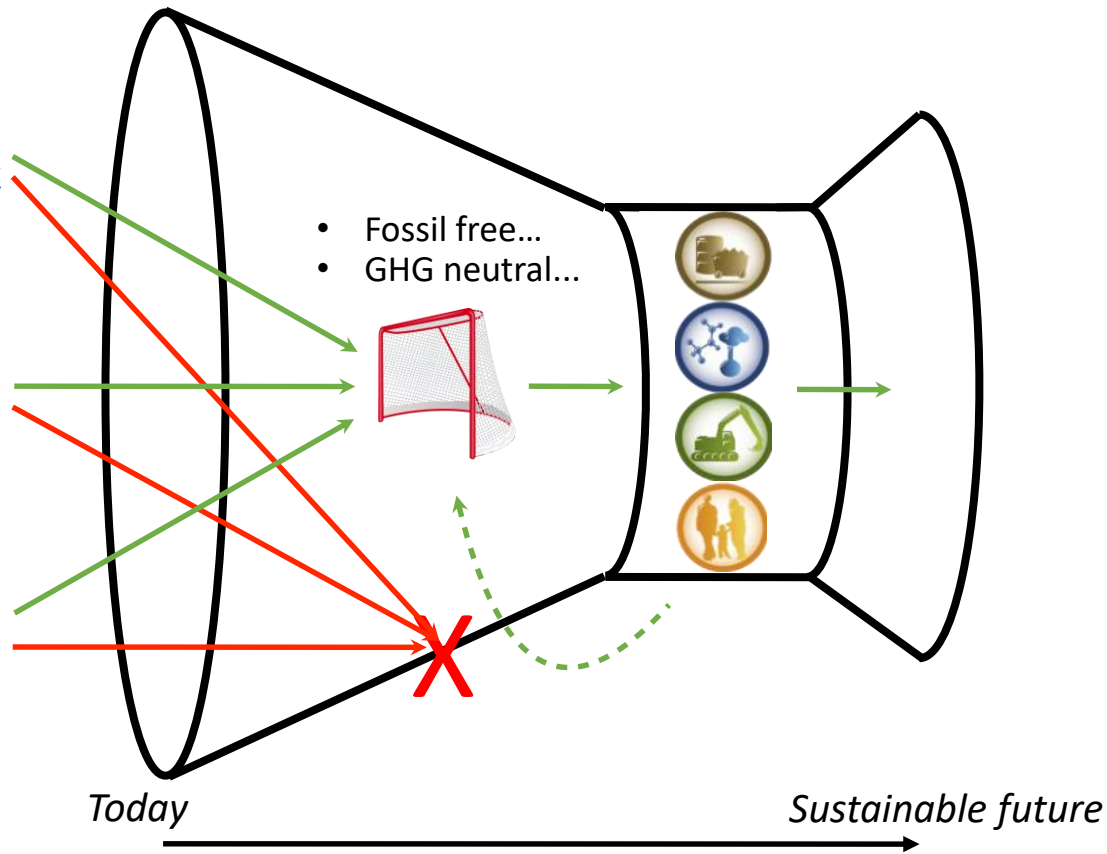
https://commons.wikimedia.org/wiki/File:Ru%C3%ADdo_Noise_041113GFDL.JPG



<https://foundation.wikimedia.org/wiki/File:Diesel-smoke.jpg>

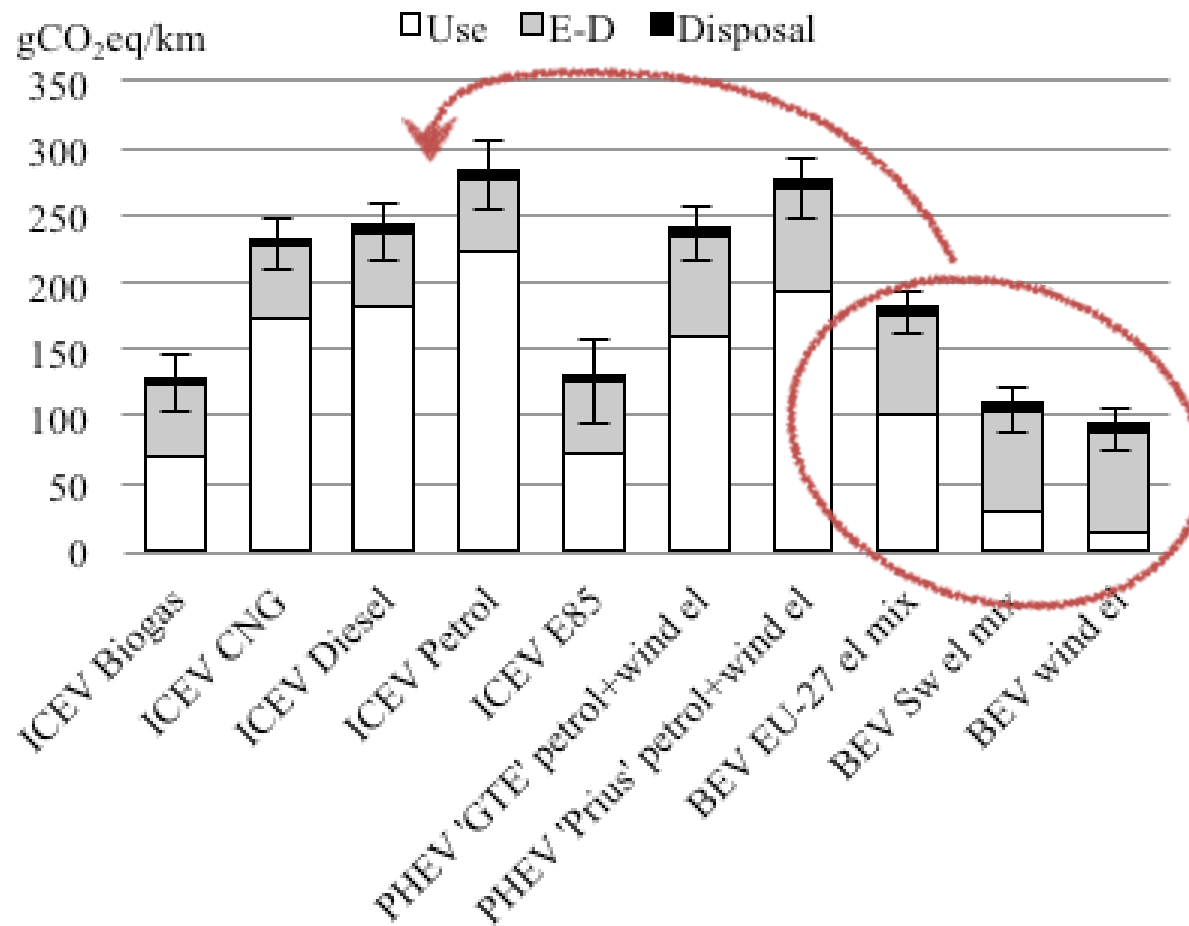


<https://commons.wikimedia.org/wiki/File:Melkova.jpg>



European Regional Development Fund

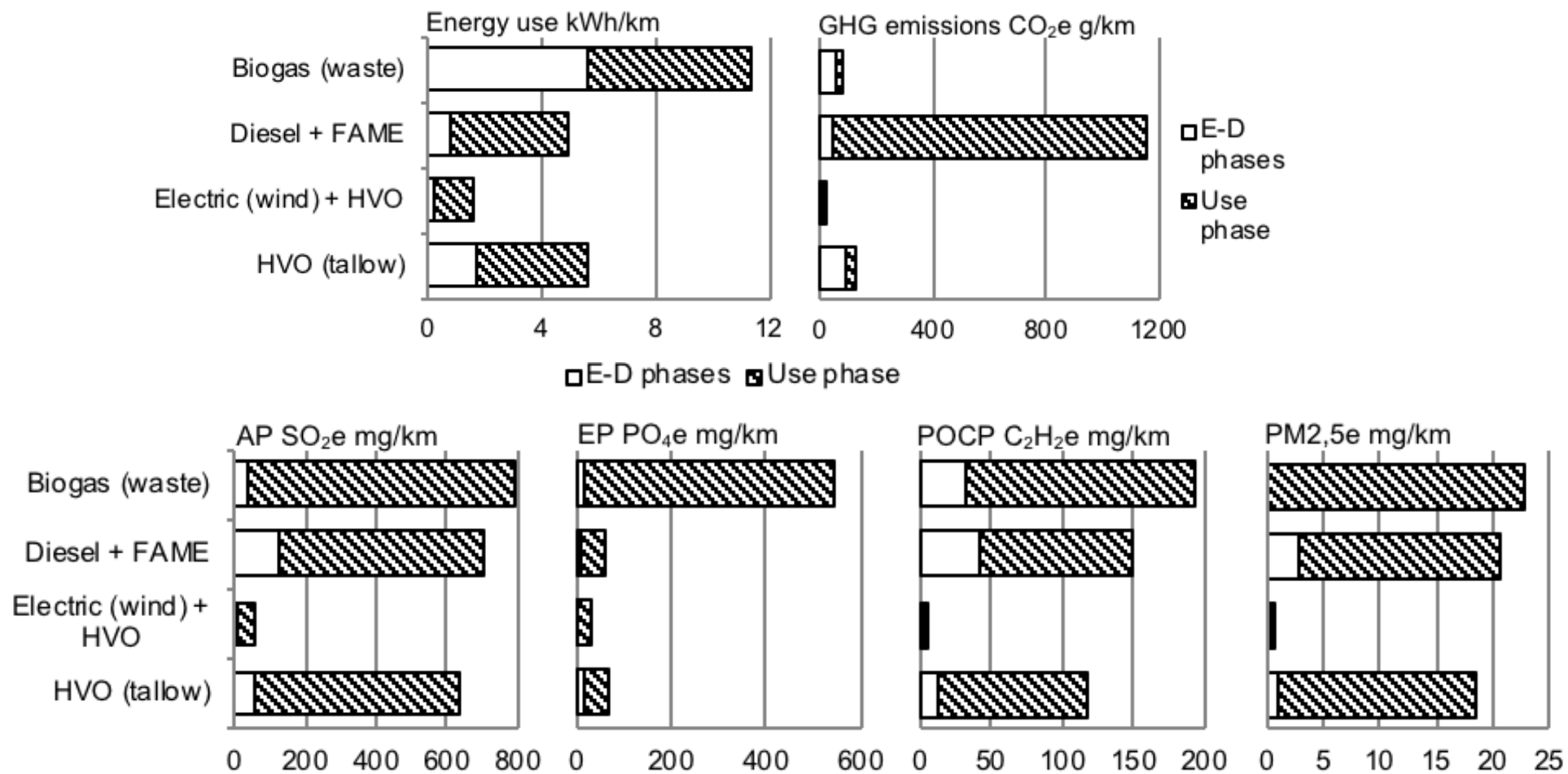
LCA Climate Change (cars, i.e. VW Golf)



Source: Borén, S., Ny, H., 2016
 within the 95% confidence interval, according to
 ReCiPe midpoint (H) v1.12



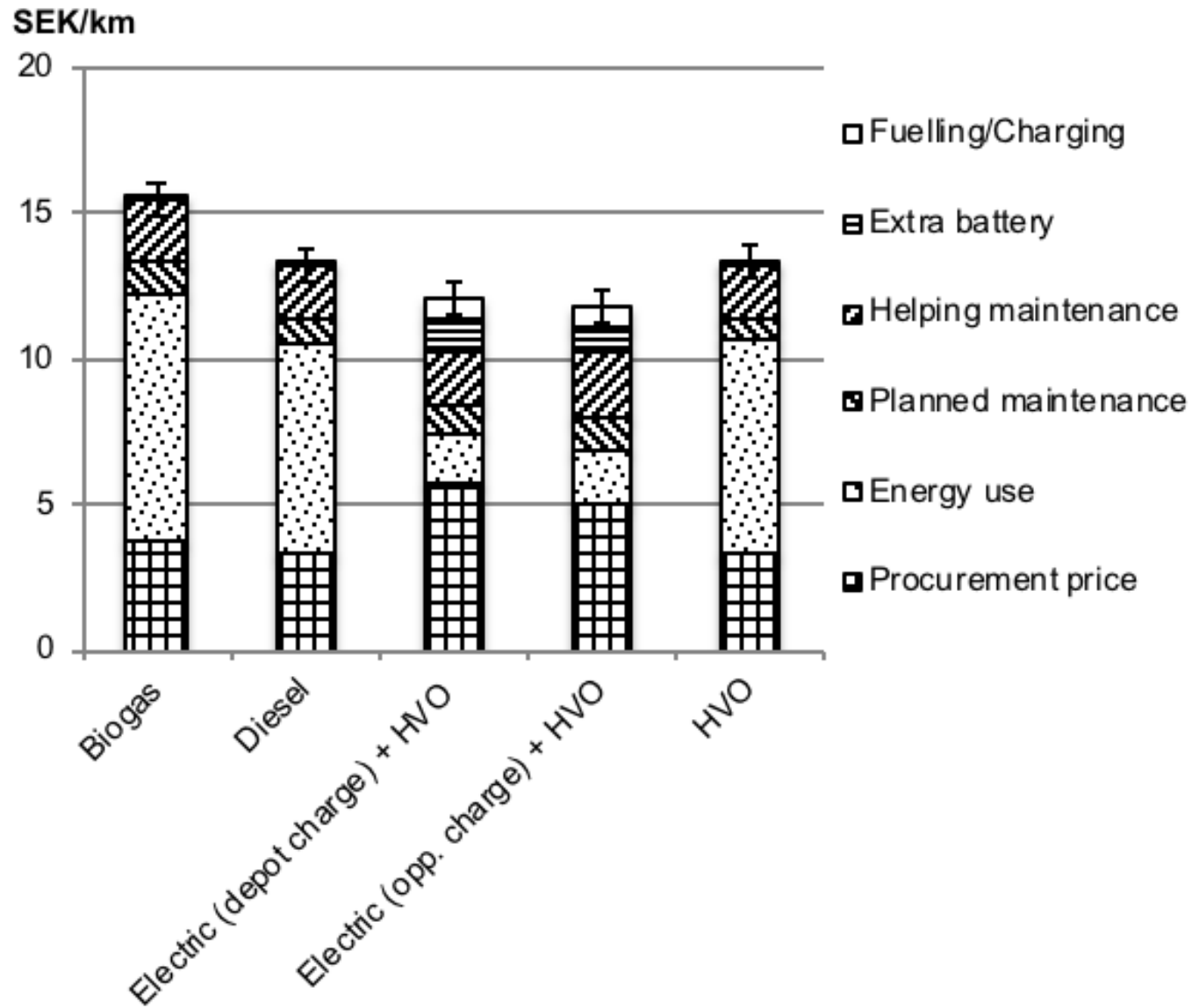
LCA Buses



Sources: Borén, S., 2018 (Börjesson et al., 2010; Edwards et al., 2014; Gode et al., 2012; Nordelöf et al., 2017)

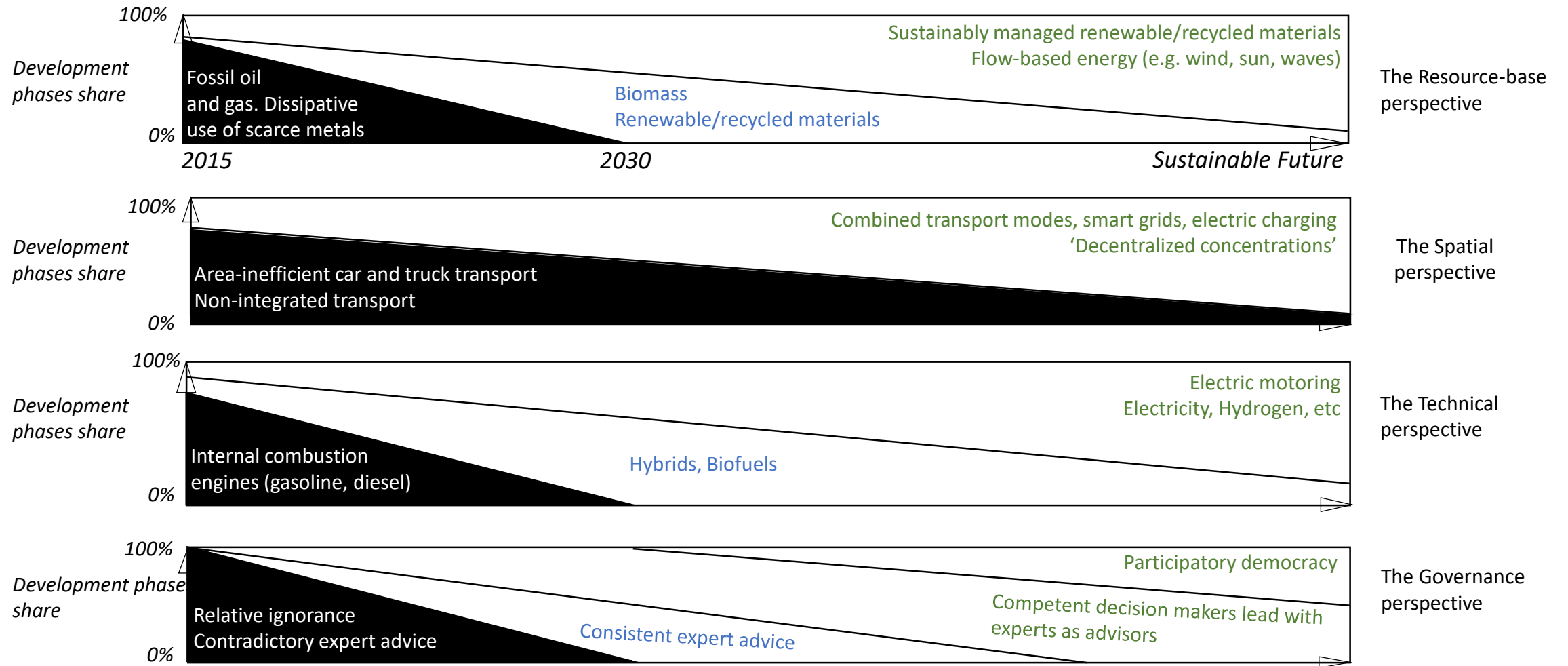


TCO Buses (Applied on bus route #1 in Karlskrona)



Source: Borén, S., 2018

Towards sustainability



Source: Borén, S., Nurhadi, L., Ny, H., Robèrt, K-H., Broman, G., 2017



References



Borén, S., Nurhadi, L., Ny, H., Robèrt, K.-H., Broman, G., Trygg, L., 2017. A strategic approach to sustainable transport system development – part 2: the case of a vision for electric vehicle systems in southeast Sweden. *Journal of Cleaner Production* 140, 62–71. doi:10.1016/j.jclepro.2016.02.055

Borén, S., 2018. Electric buses Costs, Noise, and Energy Use. *International Journal of Sustainable Transportation*. In review.

Broman, G.I., Robèrt, K.-H., 2017. A framework for strategic sustainable development. *Journal of Cleaner Production* 140, 17–31. doi:10.1016/j.jclepro.2015.10.121

Börjesson, P., Thufvesson, L., Lantz, M., 2010. Life Cycle Assessment of Biofuels in Sweden [WWW Document]. miljo.lth.se. URL [http://www.miljo.lth.se/svenska/internt/publikationer_internt/pdf-filer/Report%2070%20-%20LCA%20of%20Biofuels%20\(1\).pdf](http://www.miljo.lth.se/svenska/internt/publikationer_internt/pdf-filer/Report%2070%20-%20LCA%20of%20Biofuels%20(1).pdf) (accessed 12.2.13).

Edwards, R., Larive, J.-F., Rickeard, D., Weindorf, W., 2014. WELL-TO-TANK Report Version 4.a JEC WELL-TO-WHEELS ANALYSIS (No. EUR 26237 EN). Frontiers, Luxembourg. doi:10.2790/95629

Gode, J., Martinsson, F., Hagberg, L., Öman, A., Höglund, J., Palm, D., 2012. Miljöfaktaboken 2011 (No. A08-833). Värmeforsk, Stockholm.

Nordelöf, A., Romare, M., Tivander, J., 2017. Miljöpåverkan från elektriska stadsbussar (No. 2017:9). Chalmers Tekniska Högskola, Gothenburg.



European
Regional
Development
Fund



One ticket to the future

Alternative fuels as a way to sustainable public transport development

Magnus Forsberg
Strategic planner public transports
Region Blekinge



European
Regional
Development
Fund





Our hearts beat for
BLEKINGE

Region Blekinge

Department for
operating public
transports
(Blekingetrafiken)

Regional development

Environment
Spatial planning
Infrastructure
Public transports
Enterprise
Innovation
Education
Tourism

Culture and
leisure

28

March



**INTER
CONNECT**



European
Regional
Development
Fund

PARIS2015

UN CLIMATE CHANGE CONFERENCE

COP21·CMP11



**INTER
CONNECT**



European
Regional
Development
Fund

National Transport Infrastructure Plan 2018-2029

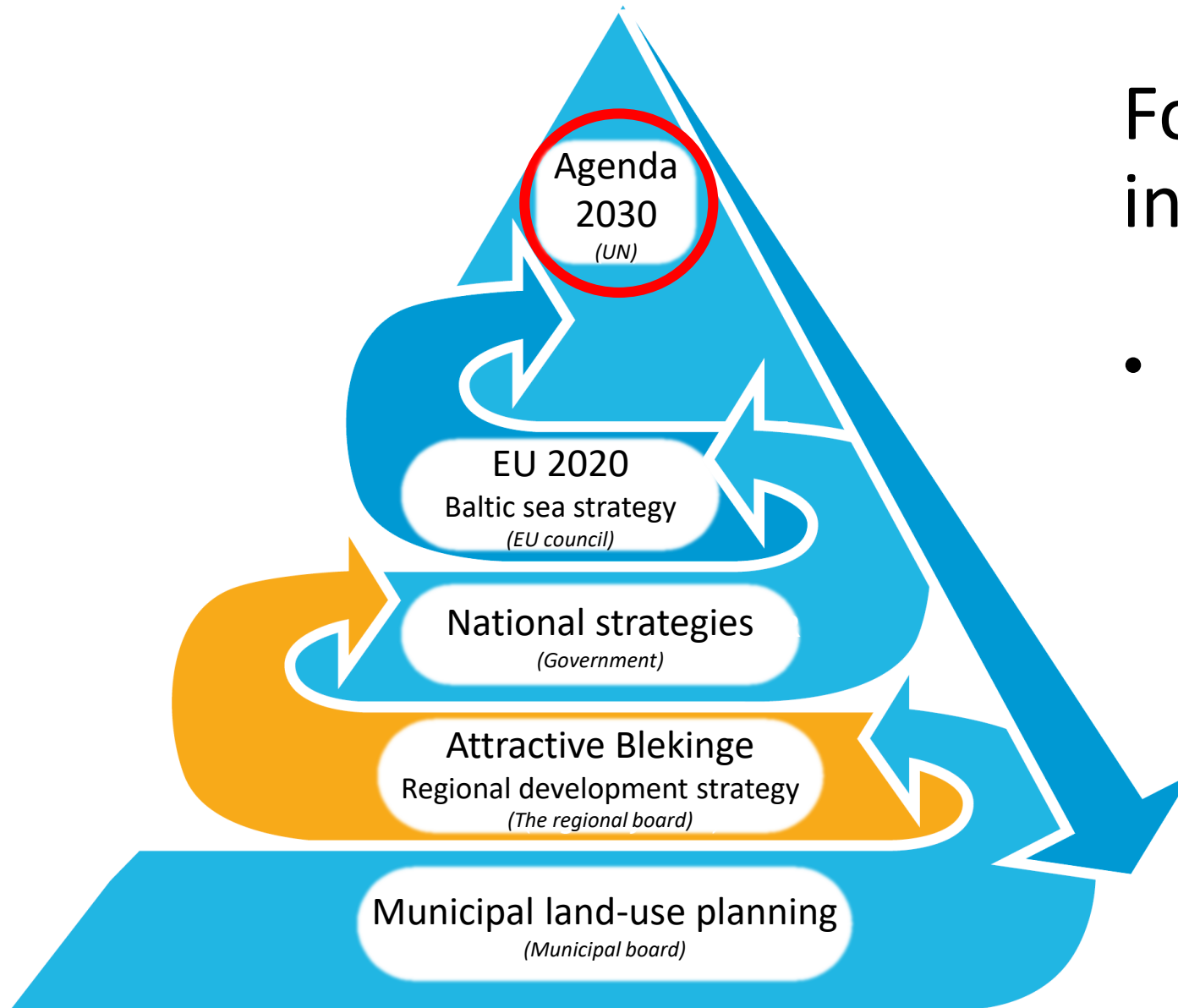
- Priority for cycling and public transport



New national tax system for vehicles

- Priority for electric cars, bikes and buses





Focus on Agenda 2030 in Blekinge

- 17 goals to reach sustainable development

Regional programme for public transport in Blekinge

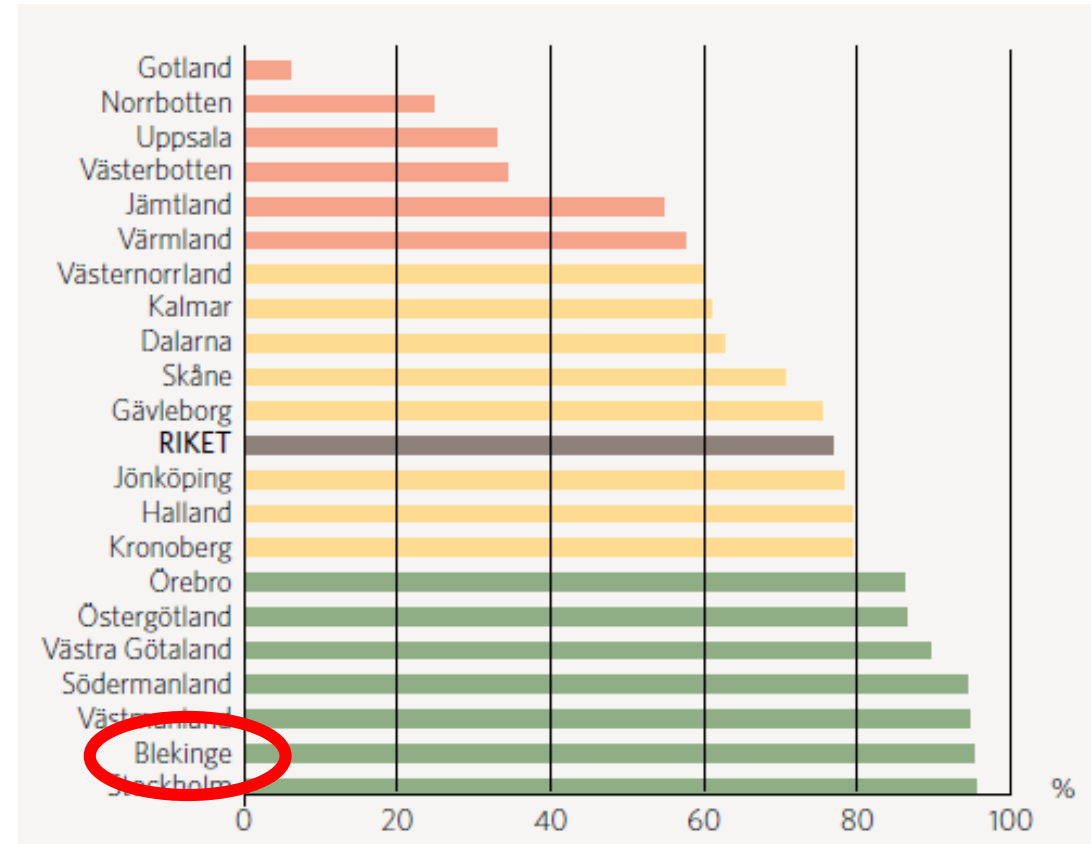
- Renewable fuels in all buses and trains
- Work towards emission-free buses in cities
- Change in parking policies
- Priority for public transport in spatial planning



Public transport in Blekinge today



- HVO in almost all buses
- Renewable electricity in trains
- Electric-hybrid buses in two cities
- 96% renewable fuels in total
- Advantage in marketing
- Improved market share



European Regional Development Fund

Possible steps in the near future

- New steps in spatial planning
- Biogas, locally produced
- Electric buses





**Thanks for
listening**